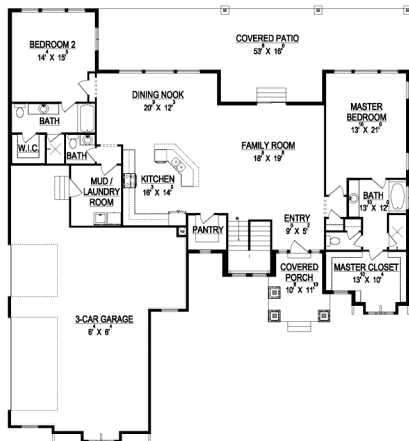


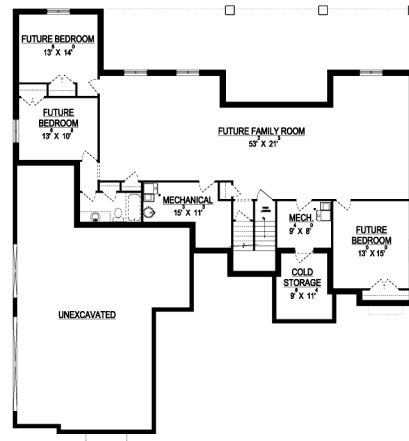
the TRUDY



*Some items shown in artistic rendering may be optional.



MAIN FLOOR



BASEMENT

STANDARD FEATURES:

- Two (2) Bedrooms and Two and a Half (2.5) Baths
- L-Shaped Kitchen, Dining, Family Room
- High Vaulted Ceiling Through Entry and Family Rooms
- Large Covered Patio
- Window Package as Designed
- Raised Entry and Stylish “Craftsman” Style Elevation
- 8/12 Pitch Roof
- Oversized Master Vanity with Large Walk-In Shower
- Three (3) Car Garage
- Walk-in Pantry
- Large Main Level Laundry/ Mud Room Combination
- Five (5) Basement Windows

SPECS:

Width:	69'-0"
Depth:	74'-0"
Upper:	0
Main:	2,277
Basement:	<u>2,335</u>
Total:	4,612
<i>Finished:</i>	<i>2,277</i>
Bed:	2
Bath:	2.5
Garage:	3



GET STARTED TODAY

801-810-8833

LightyearCustomHomes.com

