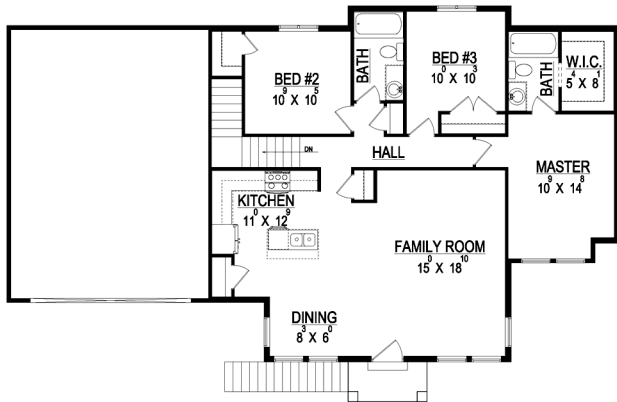


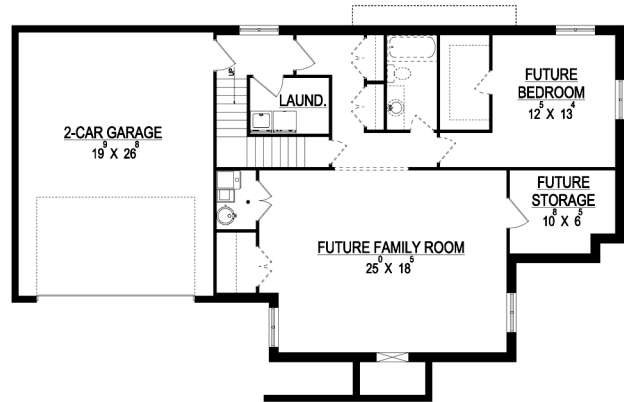
# the DIANA



\*Some items shown in artistic rendering may be optional.



MAIN FLOOR



BASEMENT

### STANDARD FEATURES:

- Three (3) Bedrooms and Two (2) Baths
- Designed with an Uphill Slope in Mind
- Garage Entrance and Laundry Room in Basement
- Vaulted Entry, Family, Dining, & Kitchen
- Window Package as Designed
- Craftsman Style Elevation with Man. Stone & Lap Siding
- Master Bath with Spacious Walk-in Closet
- Extra Deep Two (2) Car Garage
- Well Designed Kitchen with Island Bar
- Cold Storage Included
- Four (4) Basement Windows

### SPECS:

Width:	62'-0"
Depth:	40'-0"
Upper:	0
Main:	1,298
Basement:	<u>1,297</u>
<b>Total:</b>	<b>2,595</b>
<i>Finished:</i>	<i>1,395</i>
Beds:	3
Baths:	2
Garages:	2



GET STARTED TODAY

801-810-8833  
LightyearCustomHomes.com

