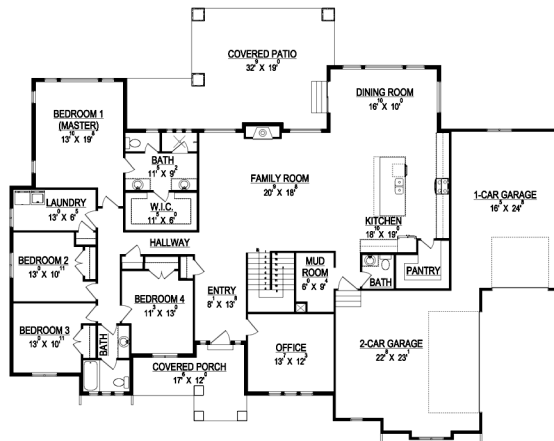


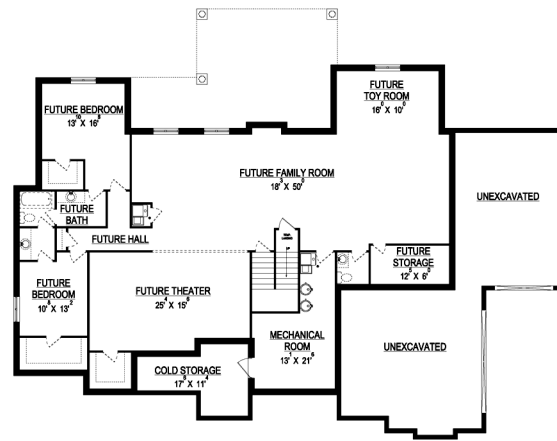
the LEXI



*Some items shown in artistic rendering may be optional.



MAIN FLOOR



BASEMENT

STANDARD FEATURES:

- Four (4) Bedrooms and Two and a Half (2.5) Baths
- L-Shaped Kitchen, Dining, Family Room
- High Vaulted Ceiling Through Entry and Family Rooms
- Large Covered Patio
- Window Package as Designed
- Raised Entry and Stylish "Craftsman" Style Elevation
- 8/12 Pitch Roof
- Split Master Vanity with Dual Sinks
- Side Entry Three (3) Car Garage
- Large Kitchen with Walk-in Pantry
- Storage Space Below Garage
- Five (5) Basement Windows

SPECS:

Width:	86'-6"
Depth:	59'-0"
Upper:	0
Main:	2,688
Basement:	<u>3,613</u>
Total:	6,301
<i>Finished:</i>	2,688
Beds:	4
Baths:	2.5
Garages:	3



GET STARTED TODAY

801-810-8833

LightyearCustomHomes.com

