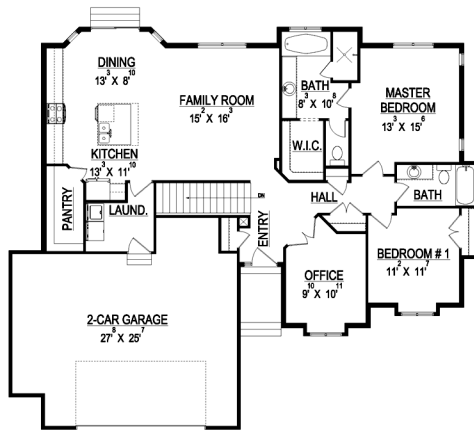


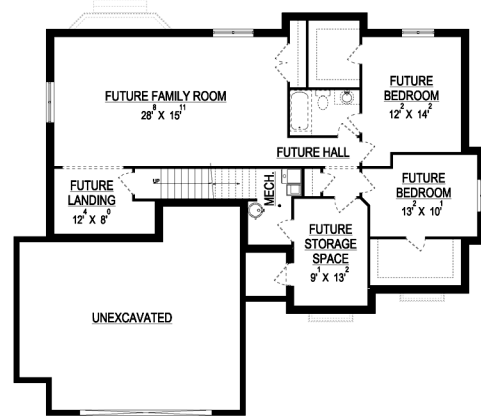
# the SUZANNE



\*Some items shown in artistic rendering may be optional.



**MAIN FLOOR**



**BASEMENT**

**STANDARD FEATURES:**

- Three (3) Bedrooms and Two (2) Baths
- Bay Window at Dining Room
- Double Doors to Main Floor Office
- Sliding Glass Door
- Window Package as Designed
- “Craftsman” style elevation
- Grand Master Bath w/ Tub & Oversized Tile Shower
- Two (2) Car Garage
- Walk-In Pantry
- Oversized Island and Curio Cabinets
- Four (4) Basement Windows

**SPECS:**

Width:	58'-0"
Depth:	49'-6"
Upper:	0
Main:	1,572
Basement:	<u>1,576</u>
<b>Total:</b>	<b>3,148</b>
<i>Finished:</i>	<i>1,572</i>
Beds:	2
Baths:	2
Garages:	2



GET STARTED TODAY

801-810-8833  
LightyearCustomHomes.com

