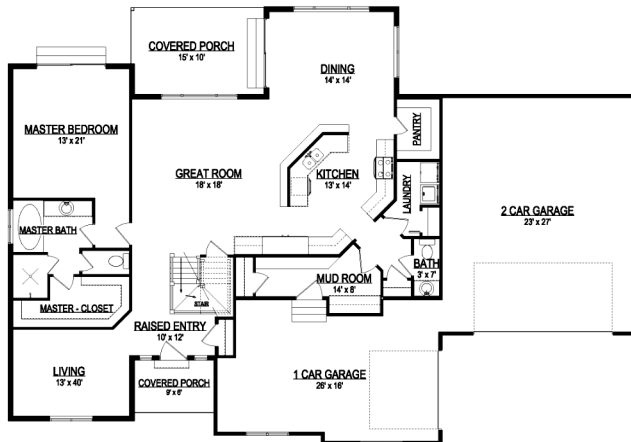


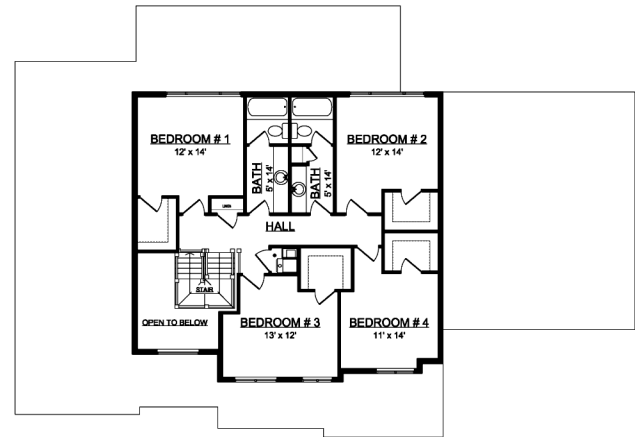
the JILLYN



*Some items shown in artistic rendering may be optional.



MAIN FLOOR



UPPER FLOOR

STANDARD FEATURES:

- (5) Bedrooms and Three and a Half (3.5) Baths
- Living Room
- Three (3) Car Garage with Side Entry
- Main Floor Laundry Room
- Grand master bath
- "Craftsman" style elevation
- Doors out Master Bedroom
- Walk-in Pantry
- Covered Patio
- Vaulted Grand Entry
- Four (4) Basement Windows

SPECS:

Width:	72'-6"
Depth:	50'-6"
Upper:	1,118
Main:	1,698
Basement:	1,758
Total:	4,574
<i>Finished:</i>	<i>2,816</i>
Beds:	5
Baths:	3.5
Garage:	3



GET STARTED TODAY

801-810-8833
LightyearCustomHomes.com

