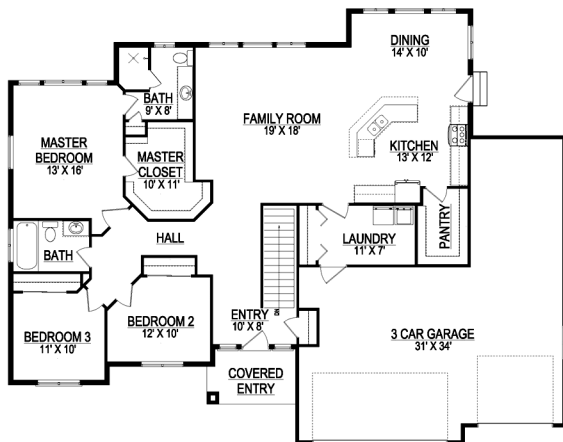


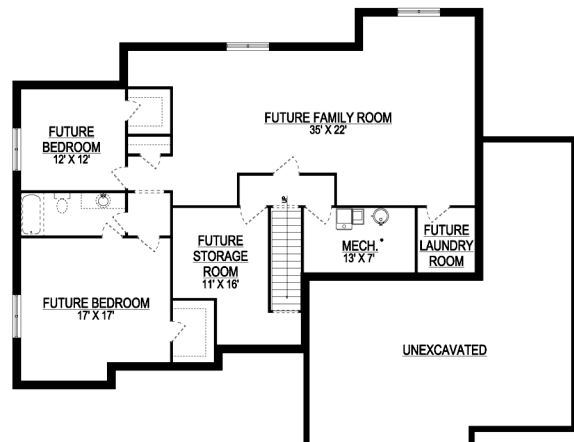
the VEONE



*Some items shown in artistic rendering may be optional.



MAIN FLOOR



BASEMENT

STANDARD FEATURES:

- Two (3) Bedrooms and two (2) Baths
- Window Package as Designed
- Three (3) Car Garage with Extra Depth
- Spacious Front Porch
- Large Walk-in Closet in Master
- Oversized Master Shower
- Traditional Elevation with Stone & Stucco
- Main floor laundry room
- Large Walk-in Pantry
- Functional Kidney Shaped Island
- Four (4) Basement Windows

SPECS:

Width:	66'-0"
Depth:	52'-0"
Upper:	0
Main:	1,926
Basement:	1,924
Total:	3,850
<i>Finished:</i>	1,926
Beds:	3
Baths:	2
Garages:	3+



GET STARTED TODAY

801-810-8833
LightyearCustomHomes.com

