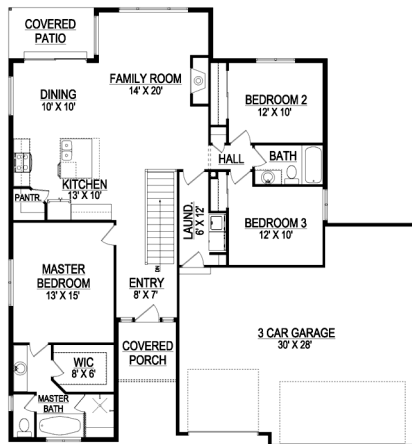


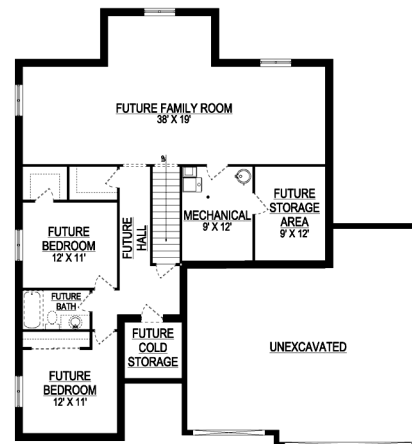
the TONYA



*Some items shown in artistic rendering may be optional.



MAIN FLOOR



BASEMENT

STANDARD FEATURES:

- Three (3) Bedrooms and two (2) Baths
- Master Bedroom Separate from Kids Bedrooms
- Oversized Three (3) Car Garage
- Covered Porch at Entry with Cold Storage Below
- Covered Patio Off Dining Room
- Fireplace in Family Room
- Grand Master Bath with Separate Tub & Oversized Shower
- Contemporary Elevation with Hip Roofs
- Main floor laundry room
- Large Square Island Bar
- Spacious Corner Pantry
- Five (5) Basement Windows

SPECS:

Width:	52'-0"
Depth:	56'-0"
Upper:	0
Main:	1,529
Basement:	<u>1,601</u>
Total:	3,130
<i>Finished:</i>	1,529
Beds:	3
Baths:	2
Garages:	3+



GET STARTED TODAY

801-810-8833
LightyearCustomHomes.com

