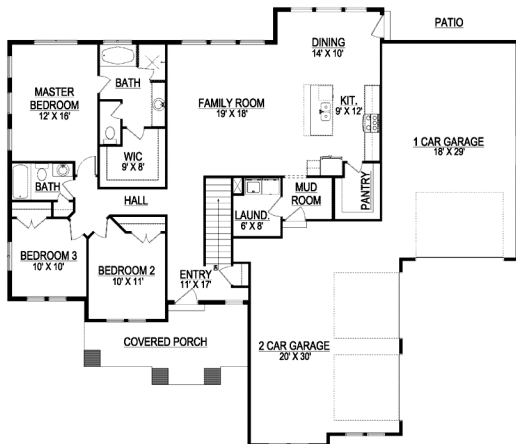


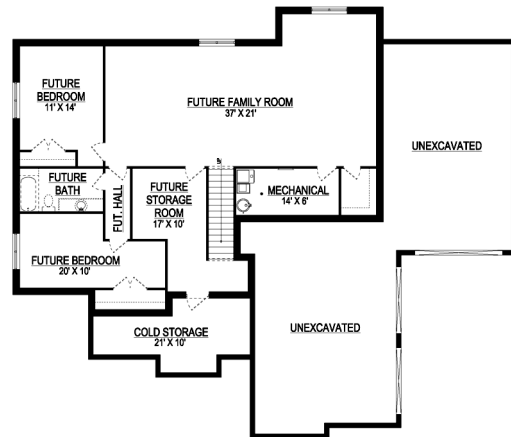
the SUMMER



*Some items shown in artistic rendering may be optional.



MAIN FLOOR



BASEMENT

STANDARD FEATURES:

- Three (3) Bedrooms and two (2) Baths
- L-Shaped Kitchen/Family/Dining Room Design
- Side Load Oversized Three (3) Car Garage (3 openings)
- Grand Covered Porch at Entry with Cold Storage Below
- Large Walk-in Closet in Master
- Grand Master Bath with Separate Tub & Shower
- Craftsman Style Ext. w/ 8/12 Pitch Roof, Corbels, & Dormer
- Main floor laundry room
- Large Island Bar
- Walk-in Pantry
- Four (4) Basement Windows

SPECS:

Width:	70'-0"
Depth:	60'-0"
Upper:	0
Main:	1,753
Basement:	1,938
Total:	3,691
<i>Finished:</i>	1,753
Beds:	3
Baths:	2
Garages:	3+



GET STARTED TODAY

801-810-8833
LightyearCustomHomes.com

UR ULRICHREALTORS
801-733-6555