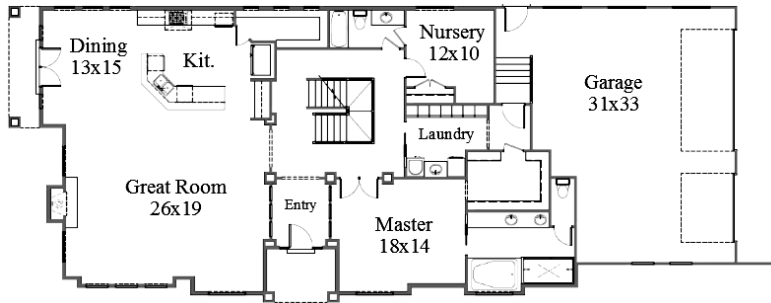


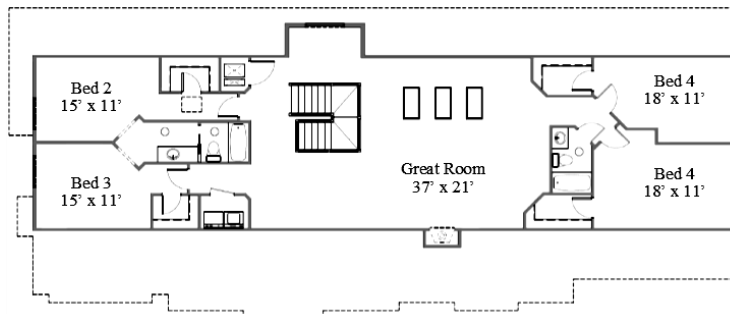
the KATIE



*Some items shown in artistic rendering may be optional.



MAIN FLOOR



UPPER FLOOR

STANDARD FEATURES:

- Six (6) Bedrooms & Four (4) Full Baths
- Three (3) Car Garage w/ Side Entry
- Suspended Garage Slab
- Two (2) Family Rooms
- Grand Master Bath
- "Craftsman" Style Elevation
- Covered Patio Off Dining Room
- One (1) Fireplace
- Three (3) Skylights in Loft
- Oversized Kit. Island and Spacious Walk-in Pantry
- Five (5) Basement Windows

SPECS:

Width:	92'-0"
Depth:	39'-0"
Upper:	1,999
Main:	2,356
Basement:	3,274
Total:	7,629
<i>Finished:</i>	<i>4,355</i>
Beds:	6
Baths:	4
Garages:	3



GET STARTED TODAY

801-810-8833
LightyearCustomHomes.com

