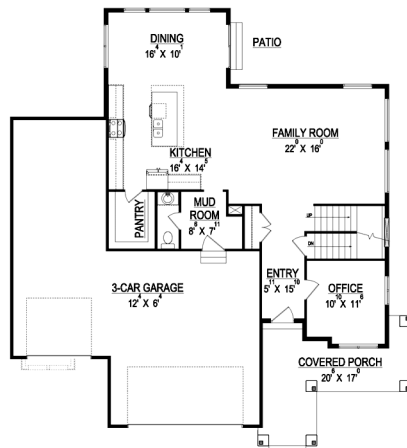


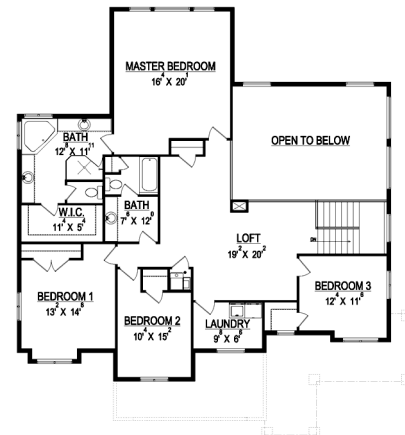
# the KRISTIN



\*Some items shown in artistic rendering may be optional.



**MAIN FLOOR**



**UPPER FLOOR**

### STANDARD FEATURES:

- Five (5) Bedrooms and Three (3) Baths
- L-Shaped Family, Kitchen, & Dining
- Very Large Loft Space in Bonus Room
- Covered Patio out Dining
- Window Package as Designed
- “Craftsman” style elevation
- Grand Master Bath w/ Oversized Tile Shower
- Four (4) Car Garage
- Walk-in Pantry
- Main Floor Office Space or Flex Room
- Five (5) Basement Windows

### SPECS:

Width:	55'-6"
Depth:	60'-6"
Upper:	1,796
Main:	1,309
Basement:	<u>1,541</u>
<b>Total:</b>	<b>4,646</b>
<i>Finished:</i>	<i>3,105</i>
Beds:	4
Baths:	2.5
Garages:	3



GET STARTED TODAY

**801-810-8833**  
LightyearCustomHomes.com

