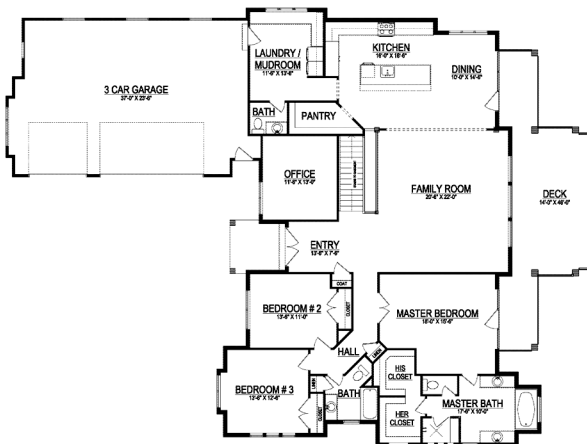


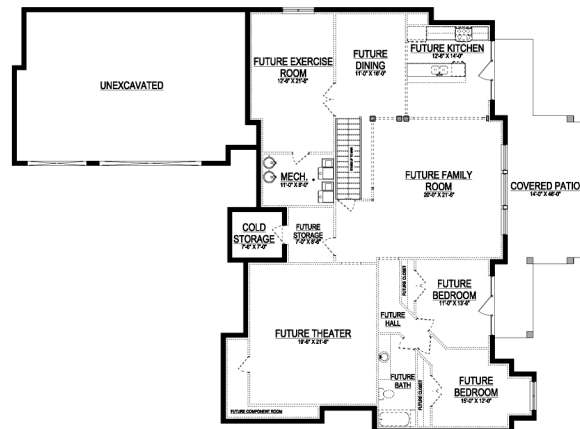
# the LIZ 2



\*Some items shown in artistic rendering may be optional.



**MAIN FLOOR**



**BASEMENT**

**STANDARD FEATURES:**

- Three (3) Bedrooms and Two and a Half (2.5) Baths
- Designed for a Daylight Basement
- Side Entry Three (3) Car Garage
- Covered Porch at Entry with Cold Storage Below
- Large Deck Across Back of Home with Doors From Master Suite
- His and Her Closets off the Master Bath
- Grand Master Bath with Separate Tub & Oversized Shower
- High Pitched Roofs with Dormer Windows
- Large Main Floor Laundry / Mud Room
- Oversized Island with Walk-in Pantry
- 2 Doors Out Back Basement to Covered Patio
- Five (5) Basement Windows

**SPECS:**

Width:	67'-6"
Depth:	82'-6"
Upper:	0
Main:	2,513
Basement:	<u>2,521</u>
<b>Total:</b>	<b>5,034</b>
<i>Finished:</i>	2,513
Beds:	3
Baths:	2.5
Garages:	3



GET STARTED TODAY

801-810-8833  
LightyearCustomHomes.com

