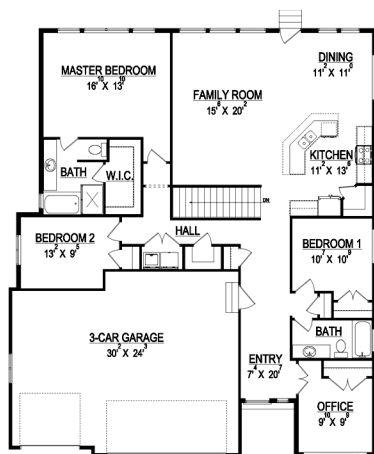


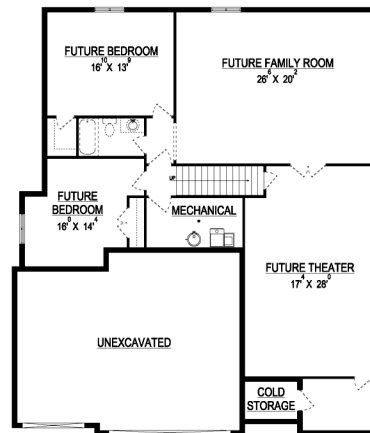
the KATHLEEN



*Some items shown in artistic rendering may be optional.



MAIN FLOOR



BASEMENT

STANDARD FEATURES:

- Four (4) Bedrooms and two (2) Baths
- Vaulted Ceilings in Entry & Family Room
- Front Load Three (3) Car Garage
- Covered Porch with Cold Storage Below
- Large Walk-in Closet in Master
- Oversized Master Shower
- Traditional Style Elevation
- Main floor laundry room
- Large Island Bar
- Walk-in Pantry
- Five (5) Basement Windows

SPECS:

Width:	49'-0"
Depth:	57'-0"
Upper:	0
Main:	1,900
Basement:	1,959
Total:	3,859
<i>Finished:</i>	1,900
Beds:	4
Baths:	2
Garages:	3



GET STARTED TODAY

801-810-8833
LightyearCustomHomes.com

