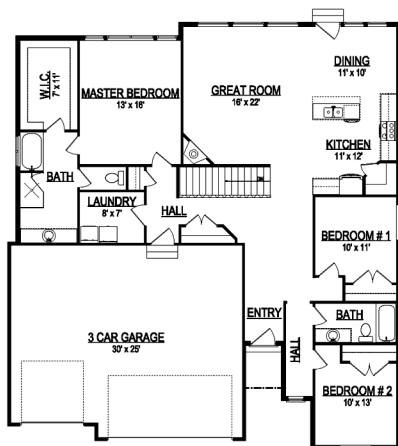


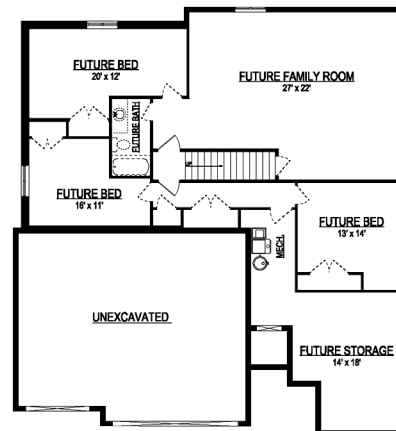
the JAMI



*Some items shown in artistic rendering may be optional.



MAIN FLOOR



BASEMENT

STANDARD FEATURES:

- Three Bedrooms and Two Baths
- Vaulted Ceiling in Entry & Great Room
- Master Bedroom and Kids Bedrooms Separated
- Corner Fireplace
- Three Car Garage
- Grand Master Bath with Separate Tub & Large Shower
- Oversized Walk-in Closet (measuring 7'x11')
- Island Bar in Kitchen with Sink in Island
- Craftsman Style Elevation
- Covered Porch with Cold Storage Below
- Five Basement Windows

SPECS:

Width:	51'-0"
Depth:	55'-0"
Upper:	N/A
Main:	1,851
Basement:	<u>1,908</u>
Total:	3,759
<i>Finished:</i>	<i>1,851</i>
Beds:	3
Baths:	2
Garages:	3



GET STARTED TODAY

801-810-8833

LightyearCustomHomes.com

UR ULRICHREALTORS
801-733-6555