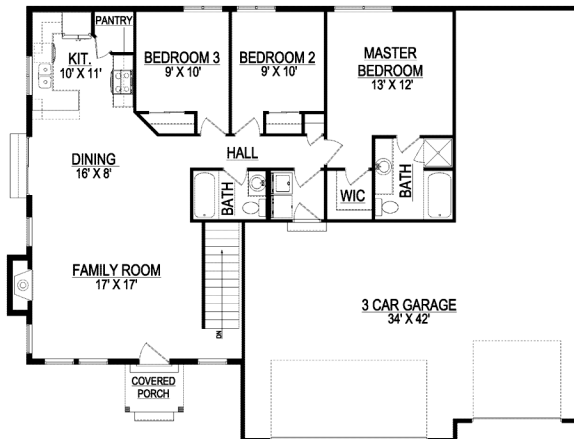


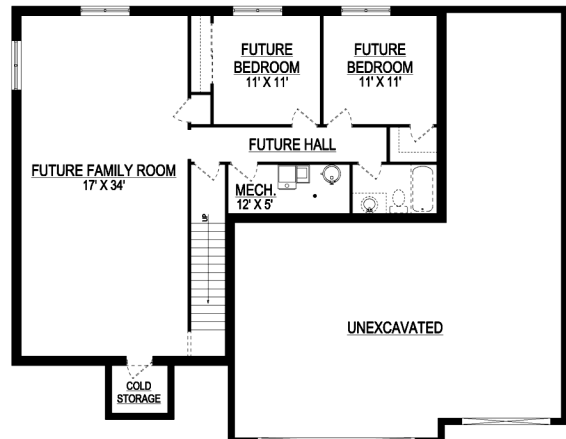
the FUJI



*Some items shown in artistic rendering may be optional.



MAIN FLOOR



BASEMENT

STANDARD FEATURES:

- Three (3) Bedrooms and Two (2) Baths
- Open & Spacious Floor Plan
- Vaulted Ceilings Through Family Room, Dining, & Kit.
- Sliding Glass Doors Out Dining Room
- Window Package as Designed
- “Craftsman” style elevation
- Grand Master Bath Sep. Tub & Shower (one-piece inserts)
- Four (4) Car Garage w/ Side Entry
- Pantry w/ Peninsula Bar
- One (1) Fireplace
- Four (4) Basement Windows

SPECS:

Width:	56'-6"
Depth:	44'-6"
Upper:	0
Main:	1,301
Basement:	1,302
Total:	2,603
<i>Finished:</i>	<i>1,301</i>
Beds:	3
Baths:	2
Garages:	4



GET STARTED TODAY

801-810-8833

LightyearCustomHomes.com

