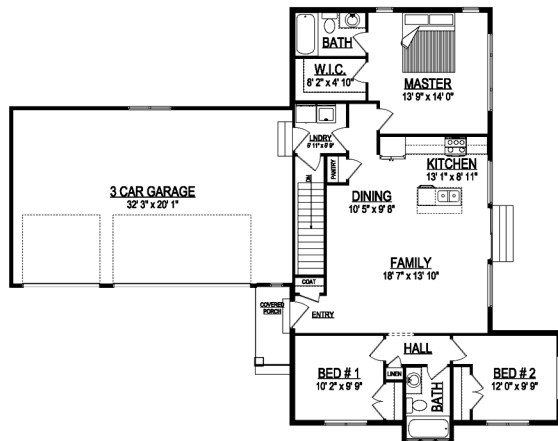


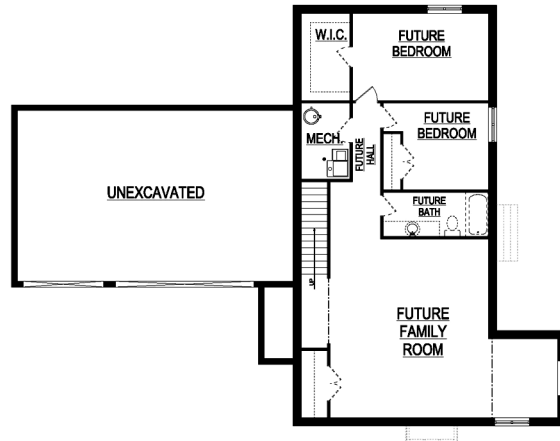
the MONTENEGRO



*Some items shown in artistic rendering may be optional.



MAIN FLOOR



BASEMENT

STANDARD FEATURES:

- Three Beds and Two Baths
- Open & Spacious Floor Plan
- Raised Entry at Covered Porch
- Large Windows Throughout the Home (as Designed)
- "Prairie" Style Elevation
- Main Floor Laundry Room
- Master Walk-in Closet & Master Bath
- Three (3) Car Garage
- Kitchen Features an Island Bar and Pantry
- Entry, Family, Dining, & Kitchen Vaulted
- Four Basement Windows

SPECS:

Width:	64'-0"
Depth:	54'-6"
Upper:	0
Main:	1,235
Basement:	1,228
Total:	2,463
<i>Finished:</i>	<i>1,235</i>
Beds:	3
Baths:	2
Garages:	3



GET STARTED TODAY

801-810-8833
LightyearCustomHomes.com

